


EMERALD
WATERWAYS

Emerald Waterways Fleet Guide



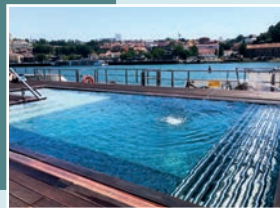
Highlights of our European Star-Ships

Pool & Evening Cinema

On the Danube, Rhine, Main and Rhône our Star-Ship's most innovative feature has to be the pool. With a retractable roof you can feel the river breeze as you take a dip in our heated pool, in the evenings watch in awe as the pool transforms into a cinema.



To make the most of the Portuguese sun, our Emerald Radiance Star-Ship sailing the Douro instead has a spa-style Serenity Pool situated on the Sun Deck. The perfect spot to unwind and take in the awe-inspiring landscapes and endless beauty of the Douro Valley.



Sun Deck

A panoramic rooftop space, home to a walking track, putting green and games area*, as well as deck chairs and sun-loungers, perfect for enjoying the spectacular scenery along Europe's most iconic rivers.



Sun Deck

Horizon Deck

Vista Deck

Riviera Deck



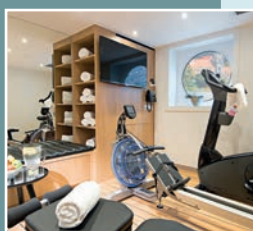
Welcoming Atrium

Low-hanging chandeliers and a glistening glass staircase, from the moment you step on-board you're surrounded by stylish, modern décor, every inch is designed with comfort and enjoyment in mind.



Fitness & Wellness Area

Our gym, complete with modern equipment suits those wanting to keep active during their time on-board. Wanting to unwind? A visit to our Wellness Area for a spa treatment is a must, indulge in a little 'me time' with a massage or facial.



Hairdressers

Book in with our on-board hairdressers for a new style or a beard trim, a lovely way to treat yourself ahead of a celebratory evening or the Captain's Gala Dinner.



Cutting a stylish and chic figure upon the rivers of Europe; Emerald Waterways' fleet of Star-Ships perfectly marry modern design with deluxe comfort for all guests. Honouring the beauty of some of the world's most aesthetically-stimulating waterways, each member of the fleet has been deliberately and responsibly designed to match and complement the eternal flow of the rivers.

Horizon Bar & Lounge

The social heartbeat of our Star-Ships, comfortable and exceptionally modern, this haven is one of the most popular areas of our vessels. Enjoy local wines, beers, spirits, cocktails or a variety of teas and coffees whilst catching up with new-found friends in the relaxed setting. When the evening arrives, we have a medley of entertainment planned especially for you.



The Terrace

Situated at the front of the ship on the Horizon Deck, The Terrace boasts breath-taking views. Enjoy coffee and croissants for breakfast and a variety of local light bites for lunch as you watch areas of outstanding natural beauty pass by.



Reflections Restaurant

Reflections Restaurant is the centre point of our on-board dining experience with a continuously evolving menu capturing seasonal and regional flavours to compliment your days ashore.

Begin your mornings with a hearty breakfast from the buffet offering hot and cold favourites. Following a morning of exploration is a delicious lunch back on-board, choose from regional delicacies, as well as many classics. Dinner is a celebration, enjoy an enticing buffet or à la carte menu with new friends while indulging in sumptuous dining in the most charming of settings.

Included with every lunch and dinner served on-board is a choice of wine, beer and soft drinks. Our wonderfully attentive team will always be on-hand to help you choose a drink to compliment your chosen meal.



Life on-board our European Star-Ships



Innovation at its finest

While traveling on the Rhine, Main, Danube or Rhône rivers, take a dip in our heated pool[¥], a sanctuary of calm with a retractable roof allowing you to welcome the invigorating river breeze. Enjoy endless views of the picturesque landscape through the floor-to-ceiling windows whilst relaxing on the comfortable lounge chairs.

One of the Star-Ship's most impressive features is that in the evenings the pool transforms into a cinema showing a variety of classic and contemporary films.

Indulge in the flavors of Europe

We believe food plays an important part in your travel experience, that's why our delicious menus are thoughtfully crafted to embrace seasonal and regional produce, influenced by the route you are traveling a true culinary adventure. Whether you are indulging in a decadent five-course à la carte meal in the Reflections Restaurant or a light-bite whilst taking in the breath-taking views on The Terrace, you can do so in elegant surroundings with exceptional service, plus wine, beer and soft drinks are included to compliment lunch and dinner.



Undeniably stylish suites & staterooms

Where comfort meets an innovative contemporary design our suites & staterooms are chic, modern sanctuaries. Boasting a wealth of sumptuous features, from luxurious toiletries and a revitalizing shower in your spacious en-suite, to a queen size* or twin hotel-style bed, draped with luxurious linens. In every cabin bottled water is replenished daily and with free Wi-Fi, a HDTV and infotainment system it's the ideal place to take some time out.

With a wide range of suites and staterooms available, we certainly have a cabin that is perfect for everyone. In all suites, a key feature is our ingenious all-weather system balcony, the perfect place to enjoy the endless river views regardless of the weather. Our staterooms offer a picture window, perfect for admiring the scenery.



Enjoy inspiring days ashore with our **EmeraldACTIVE** and **EmeraldPLUS** experiences

Every one of our unforgettable cruises has been designed to showcase the best of what the region has to offer. Whether you are exploring the romantic Rhine or the delights of the Danube you can look forward to at least one extra-special **EmeraldPLUS** experience, as well as an array of exciting **EmeraldACTIVE** highlights, all included in the price of your cruise.

Our **EmeraldPLUS** excursions take you to the heart of local culture, helping you enjoy authentic customs and traditions. These enriching events allow you to explore the must-see hotspots and discover lesser known gems, making for a memorable adventure.



Gain a deeper understanding of each destination you visit with our **EmeraldPLUS** excursions, from visiting a Slovakian family for coffee and cake to an enchanting guided tour of Keukenhof Gardens.

We believe it's these special touches that make a river cruise with Emerald Waterways truly unforgettable, offering moments of joy, wonder and discovery that you'll treasure for a lifetime.

To suit the more active guest we have a range of **EmeraldACTIVE** excursions that allow you to stretch your legs and keep active amid the inspiring backdrops of Europe's iconic waterways. With trekking poles provided in your suites and staterooms you'll have the chance to explore wondrous locations with ease.

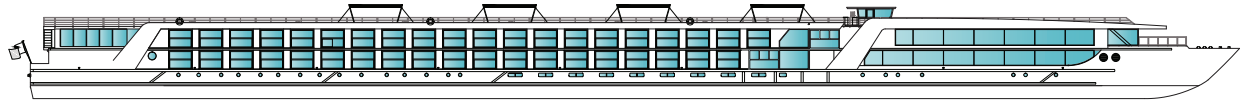
Most of our Star-Ships carry a number of bicycles[‡] for you to borrow free of charge, a fun way to discover the very best that this amazing continent has to offer. Embark on a bike tour of the rolling vineyards of Wachau Valley, a guided walk through vineyards in Tournon, a canoeing experience on the Douro and you can even take part in a yoga lesson on-board.

[‡] Please note the Emerald Radiance on the Douro does not have bicycles or an indoor pool / cinema instead there is a spa-style Serenity Pool on the Sun Deck. * Excludes Emerald Single Staterooms

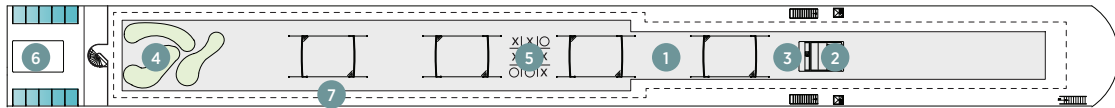
Rhine, Main & Danube deck plans

Emerald Sky, Star, Dawn & Sun

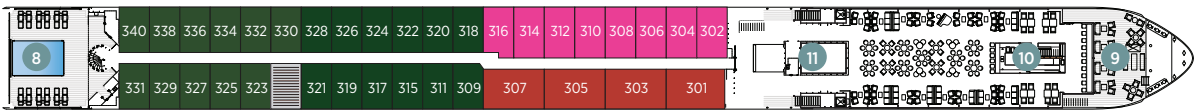
- Built: 2014/15
- Length: 443ft
- Guests: 182
- Cabins: 92
- Crew Members: 47



Sun Deck



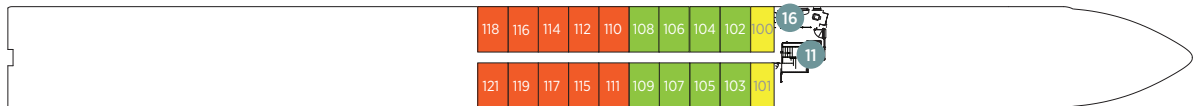
Horizon Deck



Vista Deck

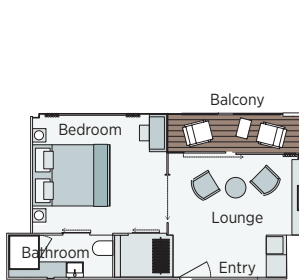


Riviera Deck

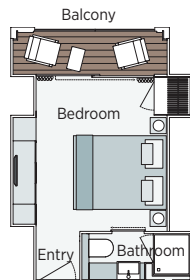


Cabin Categories		
Horizon Deck		Size ft² (m²)
CAT SA	Owner's One-Bedroom Suite	315ft² (29.3m²)
CAT S	Grand Balcony Suite*	210ft² (19.5m²)
CAT A	Emerald Panorama Balcony Suite	180ft² (16.7m²)
Vista Deck		Size ft² (m²)
CAT B	Emerald Panorama Balcony Suite	180ft² (16.7m²)
CAT C	Emerald Panorama Balcony Suite	180ft² (16.7m²)
Riviera Deck		Size ft² (m²)
CAT D	Emerald Stateroom	162ft² (15m²)
CAT E	Emerald Stateroom	162ft² (15m²)
CAT ES	Emerald Single Stateroom	117ft² (10.9m²)

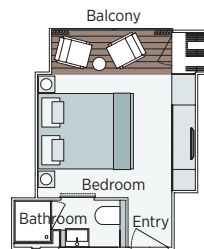
- 1 Sun Deck with Deck Chairs^
- 2 Navigation Bridge
- 3 Sky Barbecue
- 4 Golf Putting Green
- 5 Games Area
- 6 Retractable Glass Roof
- 7 Walking Track
- 8 Daytime Pool & Bar/Evening Cinema
- 9 The Terrace
- 10 Horizon Bar & Lounge
- 11 Lift
- 12 Reception
- 13 Wellness Area
- 14 Fitness Area
- 15 Reflections Restaurant
- 16 Hairdresser



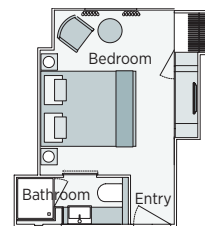
Owner's One-Bedroom Suite
315ft² (29.3m²)
CAT SA



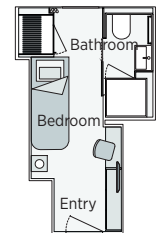
Grand Balcony Suite
210ft² (19.5m²)
CAT S



Emerald Panorama Balcony Suite
180ft² (16.7m²)
CAT A CAT B CAT C



Emerald Stateroom
162ft² (15m²)
CAT D CAT E



Emerald Single Stateroom
117ft² (10.9m²)
CAT ES

Important Information: On Emerald Sky and Emerald Star, cabin 202 has modified entry, bathroom configuration with personal assistance fittings and has no decked area with table and chairs. The cabin and deck plans, sizes and photographs are an indication only and are subject to variation.

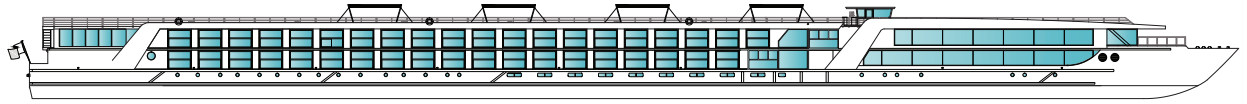
^ Due to safety, the Sun Deck will be closed when traveling under low bridges.

* Cabin 316 has a slightly varied layout.

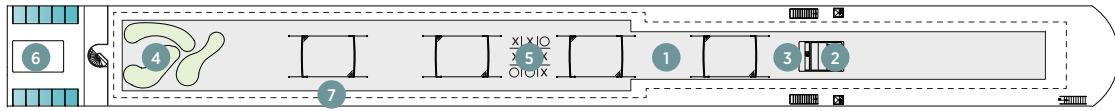
Rhine, Main & Danube deck plans

Emerald Destiny

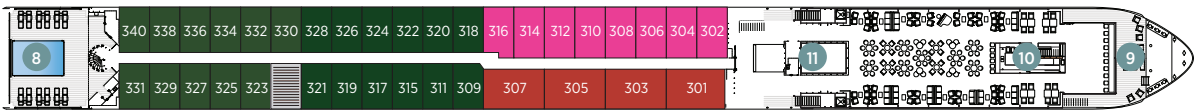
- Built: 2017
- Length: 443ft
- Guests: 182
- Cabins: 92
- Crew Members: 47



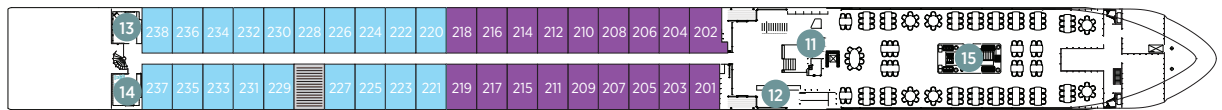
Sun Deck



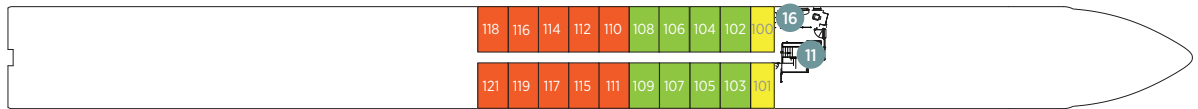
Horizon Deck



Vista Deck

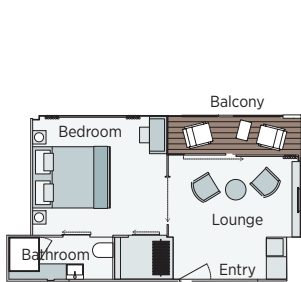


Riviera Deck

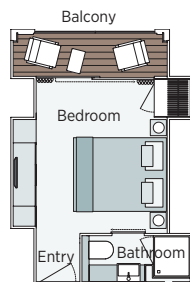


Cabin Categories		
Horizon Deck		Size ft² (m²)
CAT SA	Owner's One-Bedroom Suite	315ft² (29.3m²)
CAT S	Grand Balcony Suite*	210ft² (19.5m²)
CAT A	Emerald Panorama Balcony Suite	180ft² (16.7m²)
Vista Deck		Size ft² (m²)
CAT B	Emerald Panorama Balcony Suite	180ft² (16.7m²)
CAT C	Emerald Panorama Balcony Suite	180ft² (16.7m²)
Riviera Deck		Size ft² (m²)
CAT D	Emerald Stateroom	162ft² (15m²)
CAT E	Emerald Stateroom	162ft² (15m²)
CAT ES	Emerald Single Stateroom	117ft² (10.9m²)

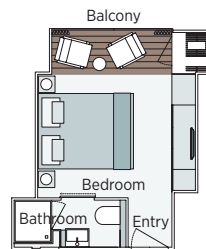
- 1 Sun Deck with Deck Chairs^
- 2 Navigation Bridge
- 3 Sky Barbecue
- 4 Golf Putting Green
- 5 Games Area
- 6 Retractable Glass Roof
- 7 Walking Track
- 8 Daytime Pool & Bar/Evening Cinema
- 9 The Terrace
- 10 Horizon Bar & Lounge
- 11 Lift
- 12 Reception
- 13 Wellness Area
- 14 Fitness Area
- 15 Reflections Restaurant
- 16 Hairdresser



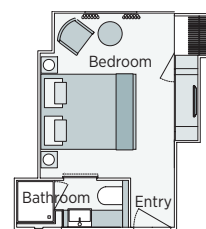
Owner's One-Bedroom Suite
315ft² (29.3m²)
CAT SA



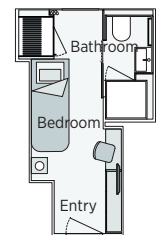
Grand Balcony Suite
210ft² (19.5m²)
CAT S



Emerald Panorama Balcony Suite
180ft² (16.7m²)
CAT A CAT B CAT C



Emerald Stateroom
162ft² (15m²)
CAT D CAT E



Emerald Single Stateroom
117ft² (10.9m²)
CAT ES

Important Information: On Emerald Destiny The Terrace has a slightly varied layout to the other European Star-Ships, with only chairs instead of tables. The cabin and deck plans, sizes and photographs are an indication only and are subject to variation.

^ Due to safety, the Sun Deck will be closed when traveling under low bridges.

* Cabin 316 has a slightly varied layout.